



JULY 23, 2021

© 2009 Comeragh Controls

No part of this document may be reproduced by any process without the prior written permission from Comeragh Controls Ltd.

The information in this document is provided for reference only. While every effort has been made to make sure it is accurate and complete, Comeragh Controls Ltd does not accept any liability arising out of the application or use of the information or products described herein. Moreover, Comeragh Controls Ltd reserves the right to alter specifications or procedures without notice.

This document may contain or refer to information or products protected by copyright or patents and does not convey any license under the patent rights of Comeragh Controls Ltd nor the rights of others.

All products referred herein are trademarks of their respective owners.

# DATA FILE MANAGEMENT

## REV 20.1.4+

MICHAEL CAREY  
COMERAGH CONTROLS



## Contents

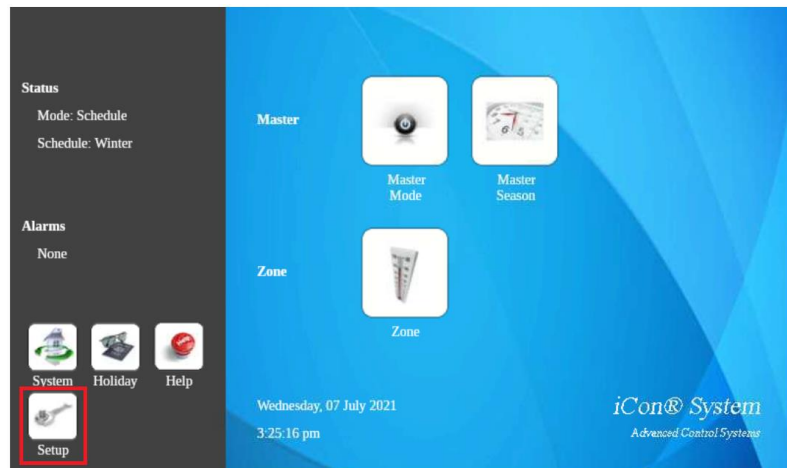
Introduction.....	2
Access Data File Management Screen.....	2
Data File Management Screen.....	3
Copy Between cc200 Project Folder and USB Folder (Memory Stick).....	4
Copy To/From Cloud Folder using WinScp.....	7
To Setup a connection to Server.....	8

## Introduction

This document details how to transfer data files (\*.dat) to and from the cc200 HV3 locally using a memory device (USB memory stick) and remotely over the internet.

## Access Data File Management Screen

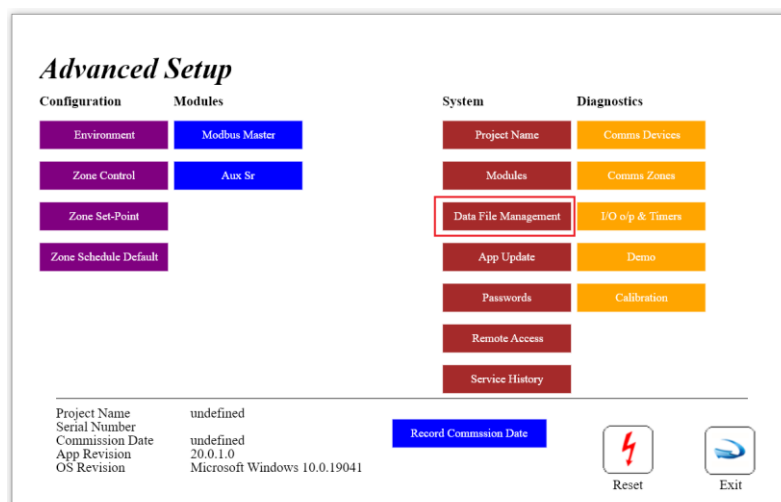
Step 1. Press “Setup” on the Home Screen



Step 2. Enter “Pass Code” and press “Advanced” on the Setup Screen



Step 3. Press “Data File Management”



## Data File Management Screen

"Set Project Folder" for cc100 on Desktop (Windows 10) only.

**Dat File Management**

Set Project Folder: 99992101

EnvConfig   
  ZoneSchConfig   
  AnaInConfig   
  MotionConfig  
 Client   
  RelayConfig   
  DHWPriorityConfig   
 Check All  
 AlarmsConfig   
  RelayTmrCycConfig   
  ModbusSlaveConfig   
 Uncheck All  
 ExSensorConfig   
  PVConfig   
  ModbusMasterConfig   
 Set Factory Defaults  
 ZoneConfig   
  DigInConfig   
  CentralManagerConfig

Create Cloud Folder, Copy all files to Folder    Copy from Folder to Project Folder  
 Copy from Cloud to Project Folder    Copy from Project Folder to Folder  
 Copy from Project Folder To Cloud

Caution! Copy function will overwrite files.

Exit

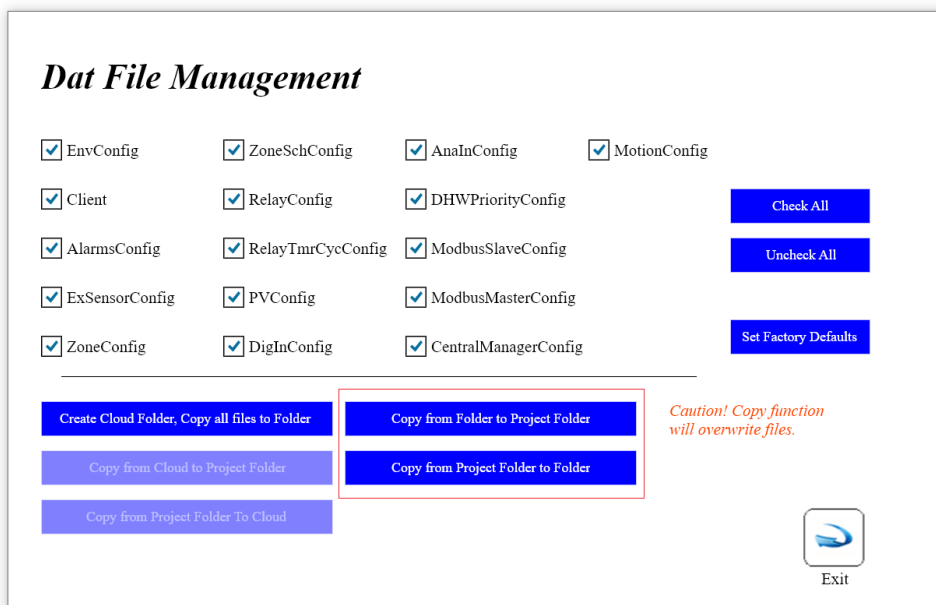
Copy to/from Cloud      Copy to/from Folder (USB memory stick)

Control	Operation
“Set Factor Default” Button	Restore selected modules to factory settings.
“Create Cloud Folder, Copy all files to Folder”	Create a Folder in the Cloud specific for cc200 Touch Screen and copy all files (regardless of file selection checkbox).  This operation is required to setup a remote folder in the Cloud. Subsequent read and write operations can be performed on a per file basis using the selection checkboxes.
“Copy from Cloud to Project Folder” Button	Copy selected modules from the source Project Folder to the Cloud.
“Copy from Project Folder To Cloud” Button	Copy selected modules from the Cloud to the destination Project Folder.

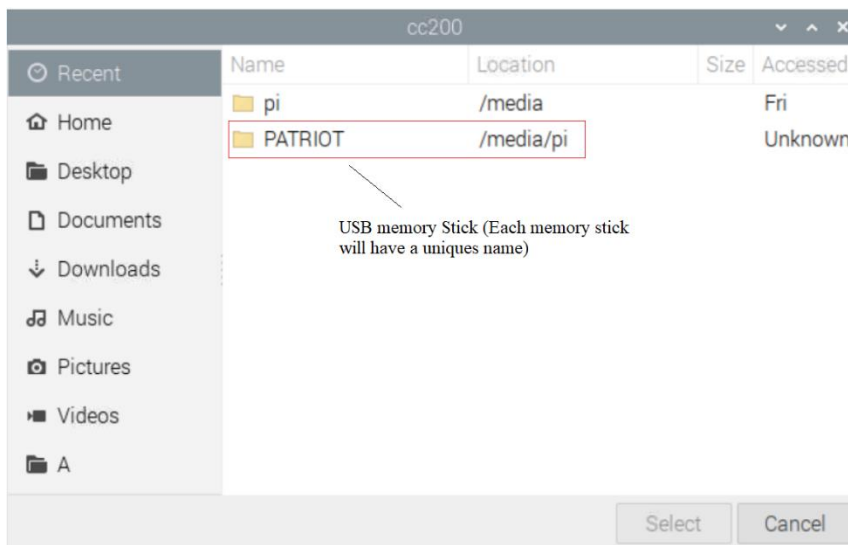
“Copy from Folder to Project Folder”	Copy selected modules from a source Folder to the destination Project Folder
“Copy from Project Folder to Folder” Button	Copy selected modules from the source Project Folder to a destination Folder
“Enable Overwrite” Checkbox	“Enable Overwrite” Checkbox must be checked if files are already in destination folders.

Note: Copy operations overwrite existing operations.

## Copy Between cc200 Project Folder and USB Folder (Memory Stick)



A Folder Dialog Box is opened when a Copy To/From Folder button is pressed.



A new folder, using the serial number” is created when copying from the source Project Folder to a destination folder. For instance, in the above example when “Patriot” (a USB memory stick) is selected, a folder “23032101” (the cc200 HV3 serial number) is created and all selected files are copied to it.

### Dat File Management

Env

ZoneSched

AnaIn

MotionDetection

Client

Relay

DHWPriority

Check All

Alarms

RelayTmrCyc

ModbusSlave

Uncheck All

ExSensor

PV

ModbusMaster

Set Factory Defaults

Zone

DigIn

CentralManager

---

*Caution! Copy function will overwrite files.*

Files Copied: Env.Dat, Client.Dat, ExSensor.Dat, Zone.Dat, ZoneSched.Dat, Relay.Dat, AnaIn.Dat, ModbusMaster.Dat,

Exit

Files Copied.

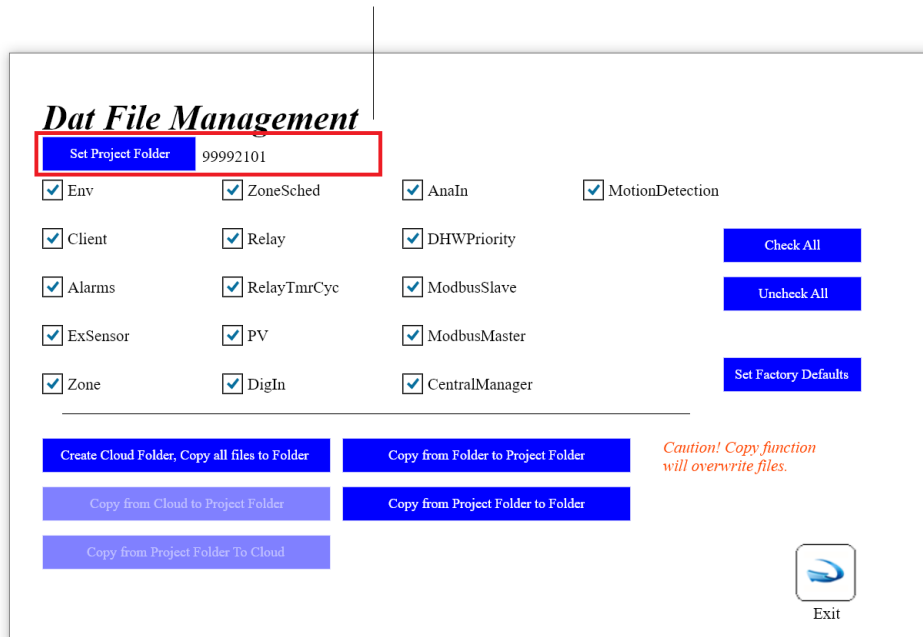
Created Folder
USB Memory Stick

Name	Size	Modified
23032101		05/08/21 16:59
boot		29/09/17 05:00
EFI		29/09/17 04:58
System Volume Information		21/09/14 13:12
Users		29/09/17 04:58
Windows		29/09/17 04:58

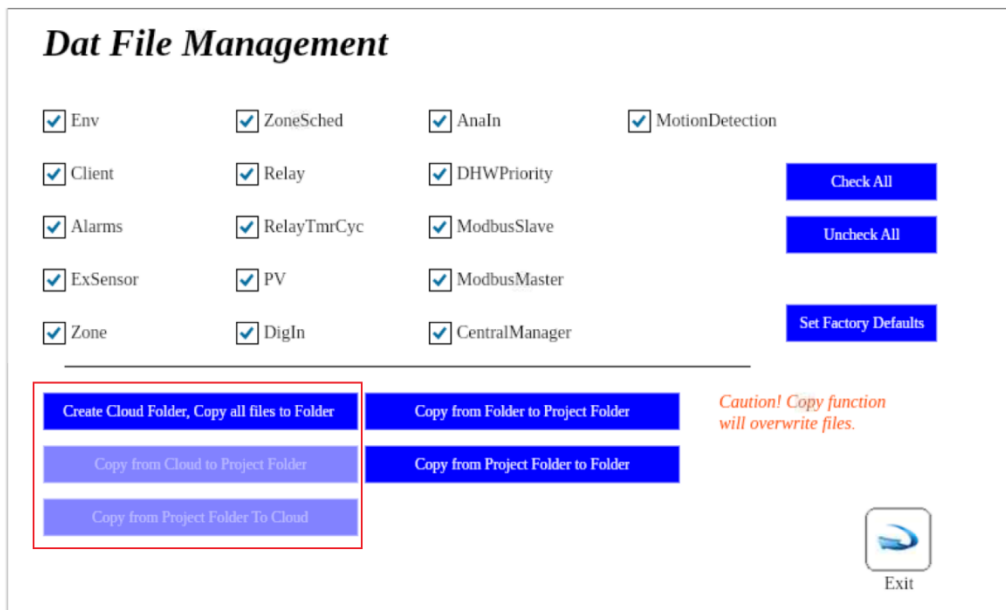
6 items (1 hidden) Free space: 7.2 GiB (Total: 7.2 GiB)

Note: When using the cc100, the Project Path must first be set.

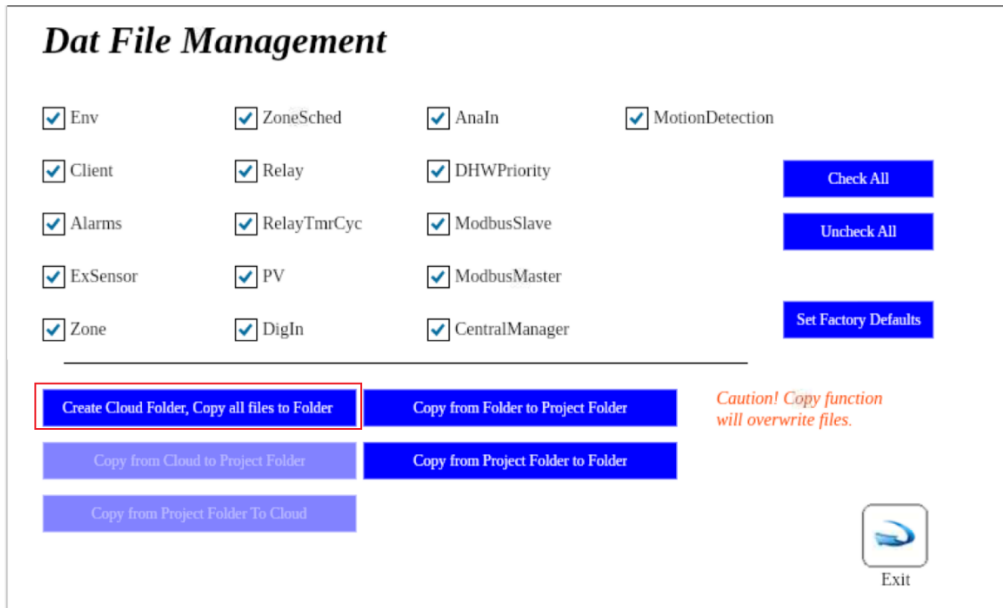
The Project Path must be set when using the cc100.



Copy To



The “Create Cloud Folder, Copy All Files to Folder” operation is required to setup a remote folder in the Cloud. Subsequent read and write operations can be performed on a per file basis using the selection checkboxes.



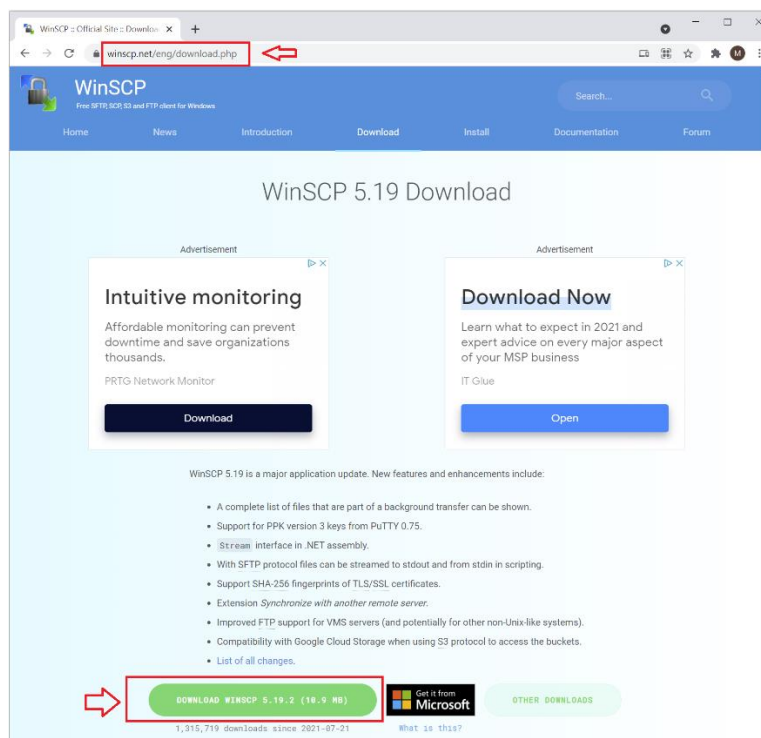
Press “Copy from Cloud to Project Folder” button to Copy selected modules from the source Project Folder to the Cloud.

Press “Copy from Project Folder To Cloud” Button to Copy selected modules from the Cloud to the destination Project Folder.

## Copy To/From Cloud Folder using WinScp

WinSCP is an application that enables file transfer between a local machine and a remote server.

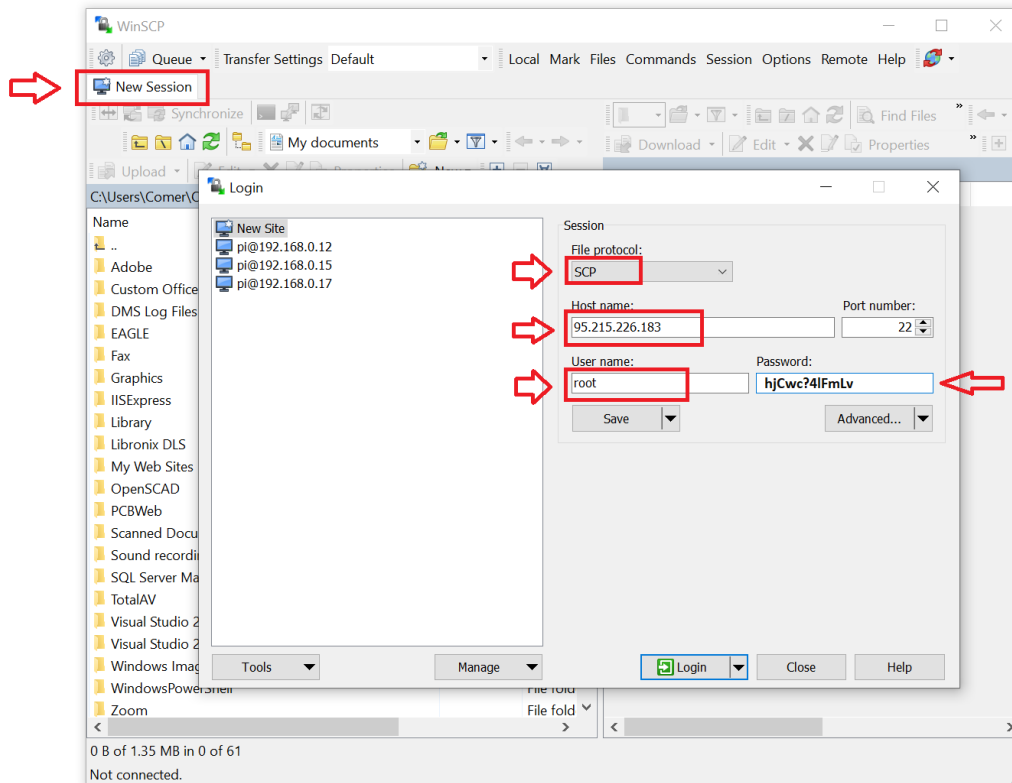
To Install, go to <https://winscp.net/eng/download.php> and follow the installation instructions.





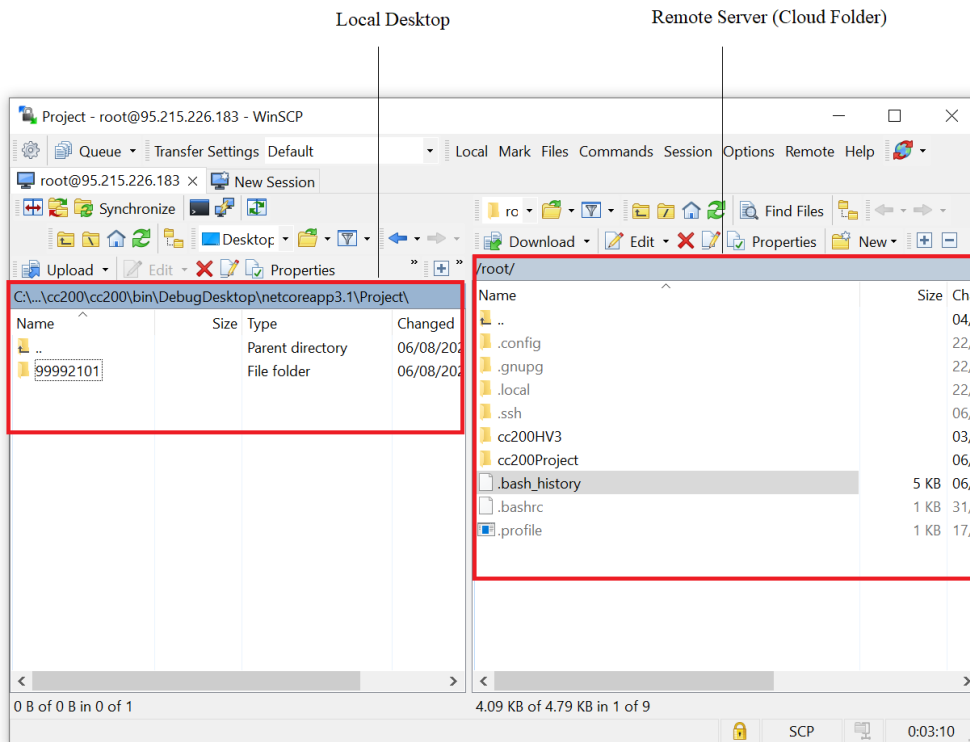
To Setup a connection to Server

Run WinScp to connect to the remote server and select “New Session”.

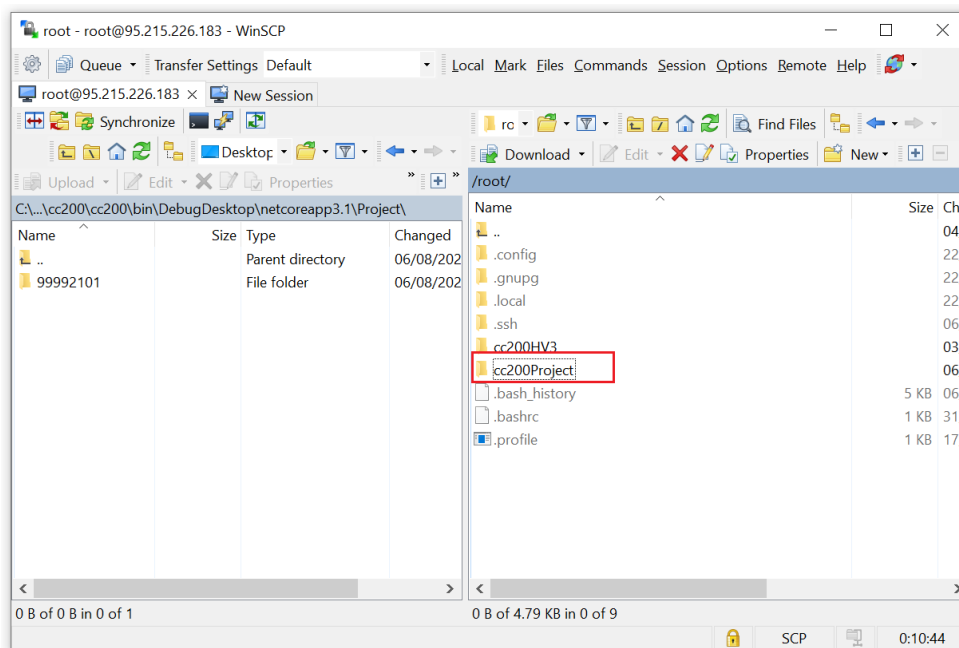


Set the File protocol to “SCP”, the Host Name to “95.215.226.183”, set the User name to “root” and the Password to “hjCwc?4lFmLv” (Note ...“l” is lowercase L). Leave the Port Number at the default setting of “22”. Press “Save” and then “Login.”

The Local Desktop and Remote Server are visible in side by side panels. Files are moved between the Local Desktop and Remote Server by drag and drop.



All project files are stored in “cc200Project”



**NO NOT CHANGE OR DELETE ANY OTHER FILES OR FOLDERS ON THE SERVER.**